

LUSHNA Petite Life

Eco Glamping pod with all the comforts of a hotel suite in minimum space.



CONNECTION TO NATURE
full panoramic window wall

TOP NATURAL MATERIALS
larch and spruce wood

UNIQUE DESIGN, FULL COMFORT
queen-size bed and openness to terrace

WOODEN MOBILE HOME
toilet, shower and kitchenette inside

FOUR SEASONS PRODUCT
eco insulation

FOUR PEOPLE COSY POD
suitable for 2 adults & 2 children

All in one - distinctive Lushna full glass wall window, top comfort and maximum functionalities in minimum space.

Glamping pod for 2 adults and 2 children with full connection to the nature, natural materials, smart interior design and affordable price. Fully equipped bathroom inside and "Smart box concept" all in one furniture (cabinet for clothes, kitchenette and folding dining table).

LUSHNA®

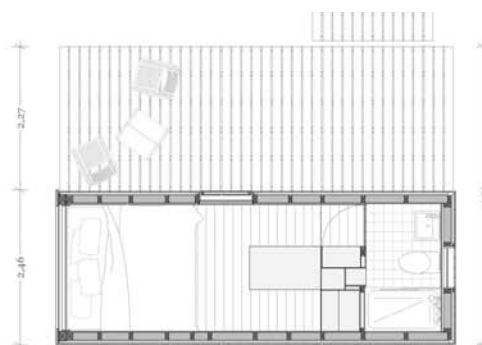
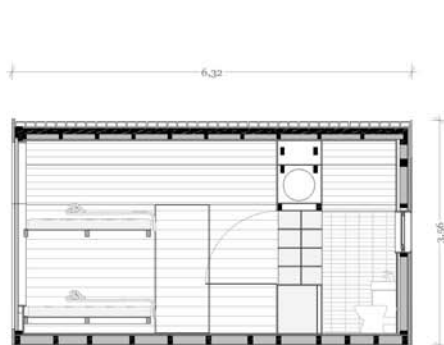
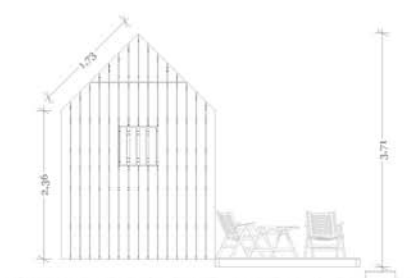
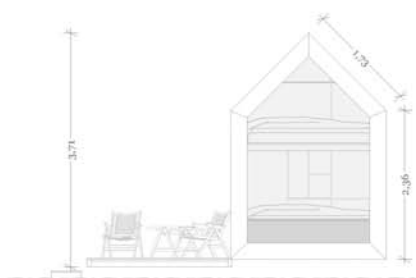
LUSHNA Petite Life

All in one. Eco Design for 4 people with panoramic view and bathroom included.



6,3 x 2,43 x 3,53 m, 11 m² **SIZE**
massive wood **MATERIAL**
50 mm wood fibers **ECO INSULATION**

ECO FOUNDATION ground screws - concrete free
SMART BOX FURNITURE All in one furniture
(wardrobe, kitchenette, table)
CAPACITY 2 adults + 2 children



LUSHNA Petite Life: Features



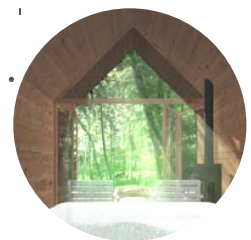
General lighting and power plugs



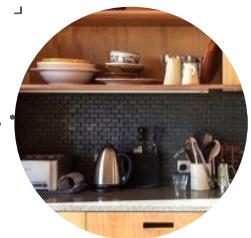
Dining table and minimalistic chairs



Quality construction, insulated for coldest winters



Bedroom in nature front glass wall - full window opening



Smart Box Furniture (folding table + wardrobe + hidden kitchenette)



Small but spacious bathroom

LUSHNA Petite Life: Equipment



Ceramic basin



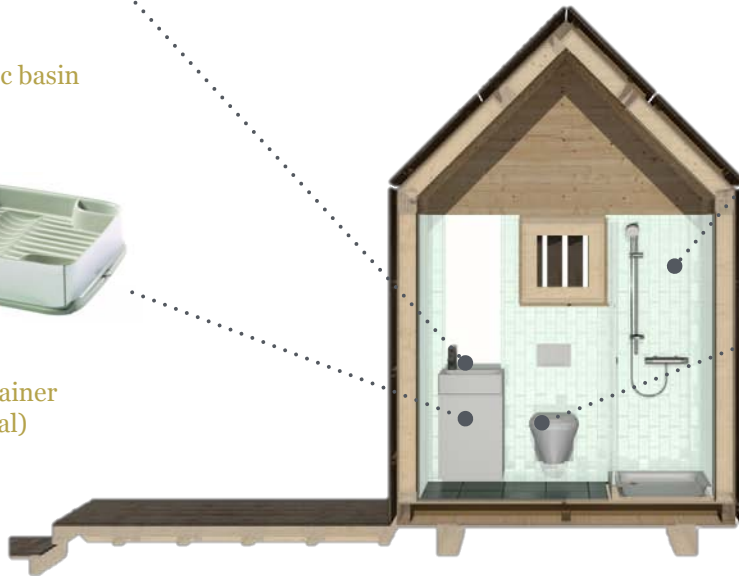
Glass shower cabin



Dish drainer (optional)



Ceramic toilet



Cooker plate (optional)



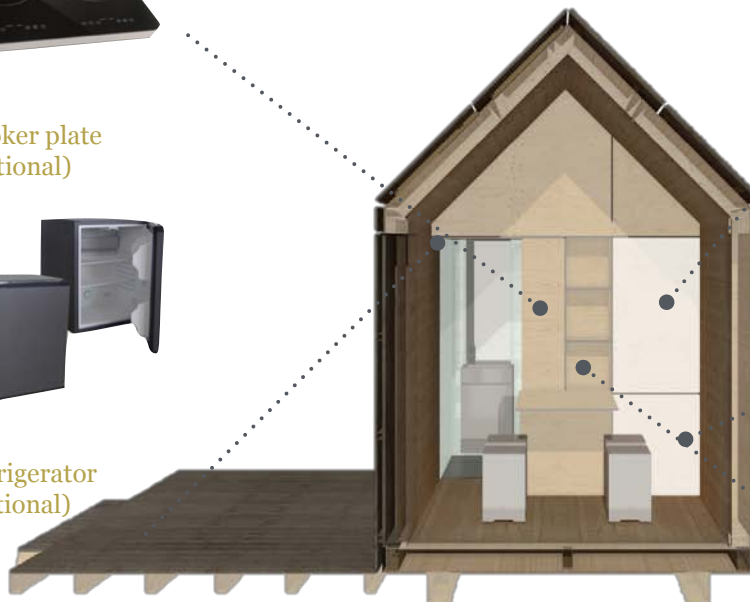
Wardrobe



Refrigerator (optional)



Storage space



Electric water kettle (optional)

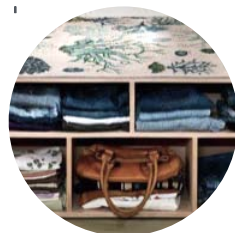
LUSHNA Petite Life: equipment



LED reading lights



Wooden bed platform



Under-bed storage (optional)



all furniture massive wood MATERIALS
electric boiler HOT WATER
220/110 V fuse box ELECTRICITY

SEWAGE grid connection or autonomous
MAINTENANCE minimal – natural untreated wood
HEATING fireplace or electrical heater



Textile quality

All Textile Elements
Including zips have up to
2 years guarantee.



Roof quality

Up to five years guarantee
on all the roofs.



Eco construction

All Lushna products are
made from natural and
ecological materials. The
use of wood as the main
material in all Lushna
products reduce CO2
emissions considerably.

LUSHNA Petite: Technical specifications

FLOOR CONSTRUCTION	<ul style="list-style-type: none">• Wooden flooring thickness 32mm, spruce AB, 2x oiled• Vapour barrier Sd = 10m• Massive wood construction studs• Insulation Wood fibers STEICO flex 12 cm• OSB board 12 mm
WALLS	<ul style="list-style-type: none">• Interior wooden cladding, tongue / groove thick. 20mm, spruce AB, 1x oiled• Vapour barrier Sd = 10m• Massive wood construction studs• Wood fibers STEICO flex 12 cm @ 65cm• OSB board 12 mm
ROOF	<ul style="list-style-type: none">• Interior wooden cladding, tongue / groove thick. 20mm, spruce AB, 1x oiled• Vapour barrier Sd = 10m• Glue-laminated construction studs KVH 8 / 8 cm @ 65cm• Wood fibers STEICO flex 12 cm• OSB board, thick 12mm• 1x EPDM waterproof membrane roofing
INNER WALLS	<ul style="list-style-type: none">• 19 mm massive 3 layered board
INTERIOR FURNITURE-BED	<ul style="list-style-type: none">• 19 mm massive 3 layered board
BATHROOM equipment	<ul style="list-style-type: none">• Sanitary kit: ceramic WC, ceramic basin, shower plate faucet with a handle.
SMART BOX CONCEPT	<ul style="list-style-type: none">• All in one wooden furniture including wardrobe, folding dining table, kitchen space and shelves equipped with electrical sockets for refrigerator, cooking plate etc
ELECTRICITY INSTALLATION	<ul style="list-style-type: none">• Robust electrical fuse box with electrical box, 6x plugins, 5x light.
LIGHTS	<ul style="list-style-type: none">• 2 LED reading lights• General light
FRONT GLASS	<ul style="list-style-type: none">• Two layered glass U= 1,1 with wooden frame.
EXTERIOR	<ul style="list-style-type: none">• Siberian Larch wood boards
FOUNDATIONS* (optional)	<ul style="list-style-type: none">• Krinner ground-screws with dimensions and length depending on type of soil of location.

LUSHNA Petite: FAQ



What is included in the BASIC price per unit?

Basic price includes the structure, roof, facades, sanitary kit, shower plate, electricity, lighting, kitchenette furniture and bed platforms. Foundations, transport and installation are not included in the basic price. Upon request we can provide a complete solution including our "Ground Screw foundation system", ecological and concrete free.

Is it wired/able to have heat, AC, fan, electricity, water?

Electrical, water and sewage installation, lighting, connections and sockets are included in the basic price.

What preparation for the placement of Vilas needs to be made?

You don't need to pre-prepare your land. We can adapt to the topography. Nevertheless we need you to provide connections for electricity, water and sewage for this unit. We can offer the complete support on designing and planning your destination.

Foundations

We use ecological Ground Screws Foundation from Krinner, Germany. We just screw the foundations to ground and place the cabins on the screws and bind them together. In this way no pre-preparation of the location is necessary. We don't damage the location and cabins can be moved to the other location without major visible signs on the previous location.

Warranty

5 years on construction and the roof.