

LUSHNA Saltroom

Discreet eco A-frame cabin for halotherapy or salt therapy with a view



CONNECTION TO NATURE
full panoramic window wall

UNIQUE TRIANGULAR DESIGN
timeless architecture with strong identity

PREPARED FOR SALT THERAPY
Halogenerator for salt aerosol included

SALT INSPIRED INTERIOR
Salt covered walls

FOUR SEASONS PRODUCT
min. 10 cm eco insulation

TOP NATURAL MATERIALS
larch and pine wood

Combining the contemporary SPA sensation of halotherapeutical benefits and glamping experience. Minimalistic interior design features salt covered walls and panoramic glass wall for real contact with nature.
Wooden roof or roof material adapted to location.

Prepared for salt therapy halogenerator for spraying salt aerosols

LUSHNA®

LUSHNA Saltroom

Featured interior salt walls and smooth design lines.



Combining the contemporary SPA with the glamping

Touch and feel of wood essence.

Panoramic glass wall for the real contact with nature.

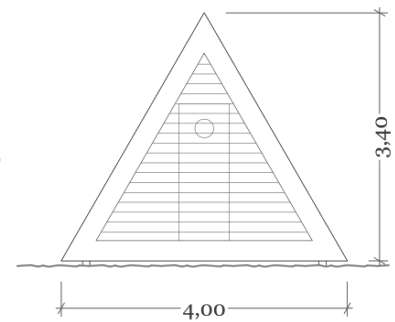
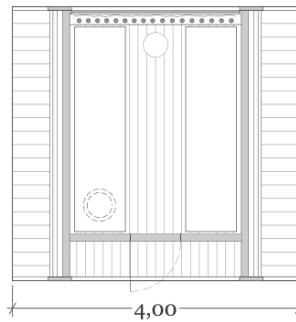
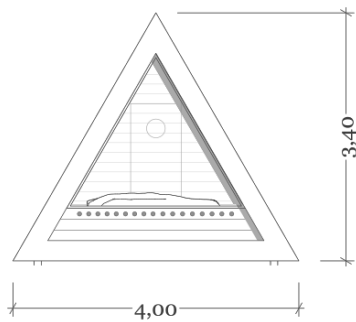
Integrated system for halotherapy.

Electronic control unit with programming options.

Special LED lighting exterior & interior.

Fast delivery and assembly.

Exterior dimensions: 4 x 3,80 x 3,40 m



LUSHNA Saltroom: features



Halogenerator

LED lights under benches

Wooden benches

Wooden pillows

Hangers for bathrobes

LED lights in porch

Construction - light frame spruce.

Insulation – 10 cm SteicoFlex wood fibre.

Roof - larch shingles.

Glass - double tempered and laminated

Triangular frames - larch.

Interior finishes & furniture - "Nordic Spruce".



Textile quality

All Textile Elements Including zips have up to 2 years guarantee.



Roof quality

Up to five years guarantee on all the roofs.



Eco construction

All Lushna products are made from natural and ecological materials. The use of wood as the main material in all Lushna products reduce CO2 emissions considerably.

LUSHNA Saltroom: Technical specifications

FLOOR CONSTRUCTION

- Wooden flooring, spruce, 2x oiled
- Vapour barrier Sd = 10mm
- Massive wood construction studs
- Insulation wood fibres STEICO flex 10 cm
- OSB board 12 mm

WALLS (front & back facades)

- Interior salt cladding,
- Foil vapour barrier.
- Wooden construction studs
- Insulation Wood fibres STEICO flex 10 cm
- Vapour barrier Sd = 10mm
- Larch wood cladding tongue and groove

ROOF

- Interior wooden cladding, Nordic fir, 1x oiled
- Sauna foil vapour barrier.
- Wooden construction studs
- Wood fibres STEICO flex 10 cm
- OSB board, thick 12mm
- Vapour barrier Sd = 10mm
- Larch wood shingles double layered.

INTERIOR FURNITURE-BED

- 2 x massive wood benches and pillows

ELECTRICITY INSTALLATION

- Robust electrical fuse box

LIGHTS

- 2x led ambient lights interior
- Built in LED exterior light in porch

GLASS

- Double layered, tempered and laminated glass U= 1,1 with wooden frame

HALOGENERATOR SYSTEM

- PrizSaltz salt aerosol halogenerator
- Powder feed capacity: 0-150 g/h (adjustable)
- Touchscreen or app controlled

FOUNDATIONS* (optional)

- Krinner ground-screws with dimensions and length depending on type of soil and the topography of the terrain of the location.

LUSHNA Saltroom: FAQ



What is included in the BASIC price per unit?

Basic price includes the structure, roof, facades, and sauna equipment. Foundations, transport and installation are not included in the basic price. Upon request we can provide a complete solution including our "Ground Screw foundation system", ecological and concrete free.

Is it wired/able to have heat, AC, fan, electricity, water?

All electrical installation and sauna heater and control unit are installed. Sauna is ready to be used. Sauna kit is included with thermostat, bucket for water and wooden pillows.

What preparation for the placement of Vilas needs to be made?

You don't need to pre-prepare your land. We can adapt to the topography. Nevertheless we need you to provide connections for electricity, water and sewage for those units, which require this. We can offer the complete support on designing and planning your destination.

Time of delivery? LEADTIME?

We can deliver up to 5 units in 3 months from the order.

Foundations

We use ecological Ground Screws Foundation from Krinner, Germany. We just screw the foundations to ground and place the cabins on the screws and bind them together. In this way no pre-preparation of the location is necessary. We don't damage the location and cabins can be moved to the other location without major visible signs on the previous location.

Warranty

5 years on the roof and construction and 2 years on the textile parts